

EPOS



GTW 270 Hybrid

Wireless earbuds | Low-latency USB-C dongle

Model: SCBT20 | SCBT16

User Guide

Contents

Welcome	2
Package contents	3
GTW 270 at a glance.....	4
Earbuds at a glance	4
Charge case at a glance.....	5
Low-latency dongle at a glance	5
How to connect to your devices	6
Pairing with a Bluetooth device.....	6
Connecting the dongle.....	7
Pairing with the dongle	8
Finding your fit.....	9
Changing the eartips	9
Positioning securely in your ears.....	9
How to use – the basics.....	10
Powering the earbuds on – auto connect	10
Powering the earbuds off.....	11
Handling audio.....	12
Handling calls.....	12
Using Siri®, Google Now™, Alexa	13
Installing the EPOS Gaming Suite	13
Changing the voice prompt language.....	14
Updating the firmware.....	14
How to charge.....	15
Charging the earbuds.....	15
Charging the case.....	16
Good to know.....	17
Pair up to eight devices.....	17
Overview of the LED indications	17
If you leave the Bluetooth or dongle’s range.....	18
Waking up from energy saving mode.....	18
Using the dongle sleeve.....	19
If a problem occurs	20
How to care for your earbuds	22
Cleaning the products.....	22
Cleaning the eartips.....	23
Specifications.....	24

Welcome

No-compromise audio for the gamer on the go.

Designed for gaming on the go, let the compact GTW 270 Hybrid wireless earbuds accompany you everywhere you go. Break free from the rat race and the hum-drum commute with EPOS immersive audio.

No-compromise sound excellence and lag-free connection with aptX™ low latency codec to your portable gaming device with the included USB-C dongle provides the best audio experience anywhere. Slip the GTW 270 Hybrid earbuds into your ears and slip away from the ordinary world with EPOS signature audio in miniature: Deep tight bass, natural clear mids and sparkling highs that provide the precise audio cues and realism that takes your game experience to the next level even while you are on the move. Keep playing no matter where you are.

Dual microphone design delivers acoustic clarity. Five hours of listening time in the earbuds are extended to 20 with the included portable charge case. The earbuds are a unique ergonomic shape that is soft and flexible that naturally adjusts to your ear and creates a comfortable, best-in-class acoustic seal. This ensures further noise attenuation and lets you lose yourself in the game's immersive audio. Break free from the ordinary and escape into new worlds.

Key benefits & features

Closed acoustic earbuds

Closed-back and in-ear for maximum noise reduction and maximum game focus

EPOS audio technology

Delivering audio excellence with noise isolating custom designed ear tips.

Dual microphone technology

Dual microphone design delivers acoustic clarity

Multi-command button

A single button switches through play, pause, next track and phone controls

IPX 5 water resistance

IPX 5 water resistance protects the earbuds from sweat and light rain

Multi-platform compatibility

Multi-compatibility through the USB-C aptX™ low-latency dongle and Bluetooth®

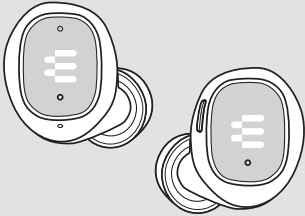
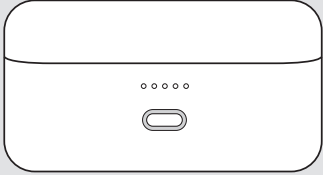

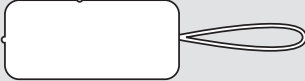
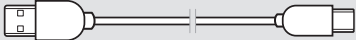
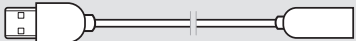


Portable charge case

Up to 20 hours of listening time: five on the earbuds plus 15 more with the case.



For safety instructions, consult the Safety Guide.

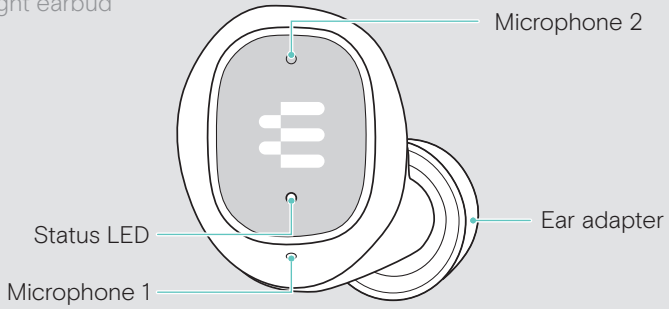
Package contents

	<p>GTW 270 earbuds L & R with built-in rechargeable battery</p>
	<p>On-the-go charge case with built-in rechargeable battery for earbuds</p>
	<p>GSA 70 USB-C Low-latency dongle</p>
	<p>Dongle sleeve</p>
	<p>USB-A to USB-C® charge cable</p>
	<p>USB-C® to USB-A extension cable</p>
	<p>Silicone eartips - XS, S, L (M pre-mounted)</p>
	<p>Quick Guide Safety Guide Compliance sheet</p>

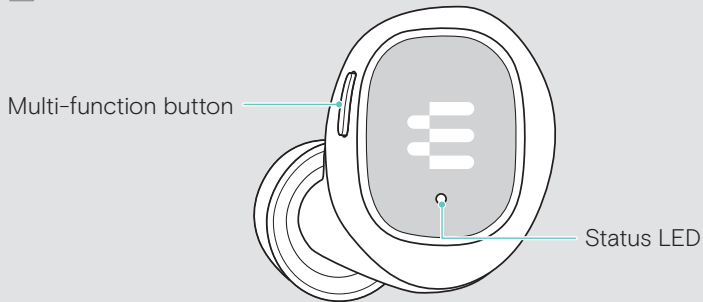
GTW 270 at a glance

Earbuds at a glance

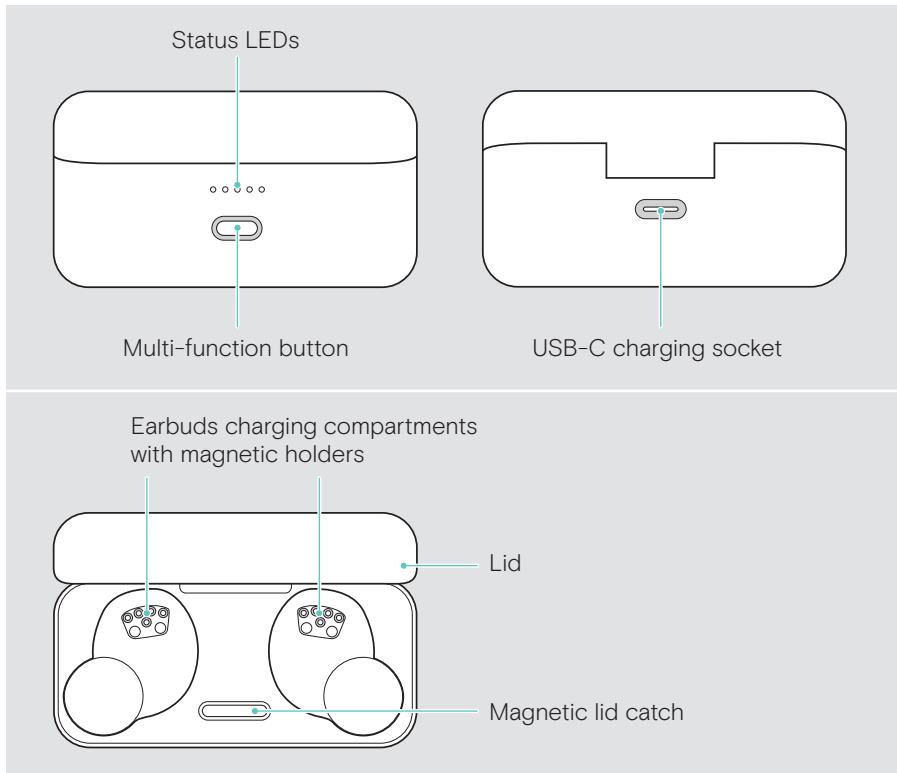
R Right earbud



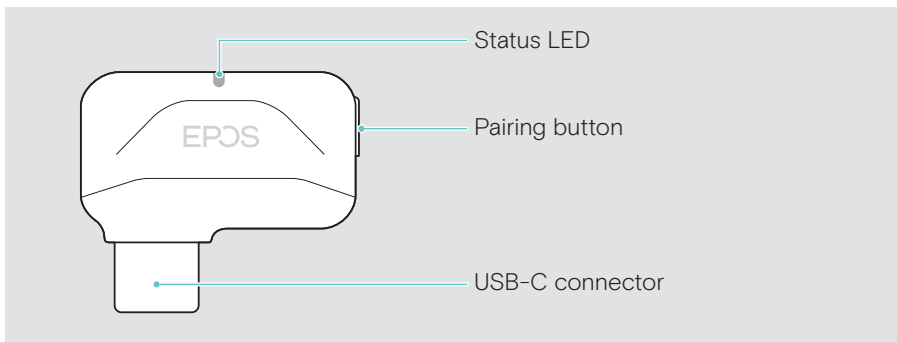
L Left earbud



Charge case at a glance



Low-latency dongle at a glance

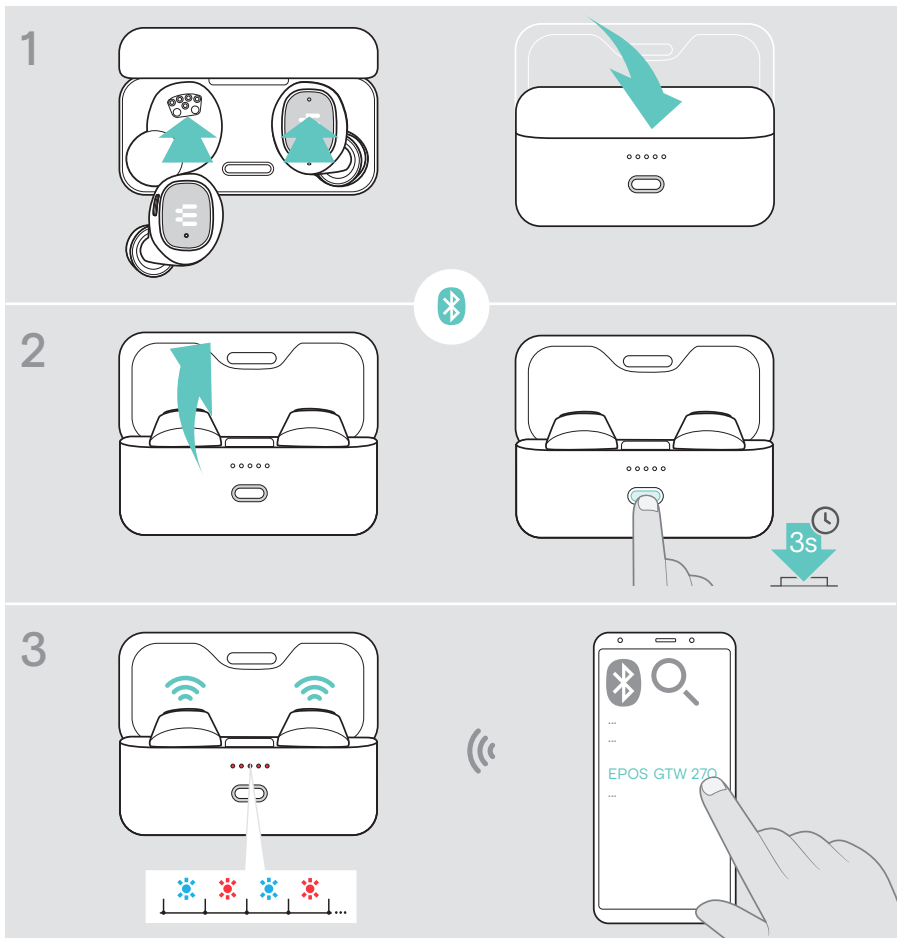


How to connect to your devices

You can connect your GTW 270 with your Bluetooth device or via the low-latency dongle. You can pair up to eight devices with your GTW 270 – see page 17.

Pairing with a Bluetooth device

- 1 Dock both earbuds. Close the lid.
- 2 Open the lid. Press and hold the charge case button to initiate pairing.
- 3 Search for Bluetooth devices – see instruction manual of your device – and select “EPOS GTW 270”.

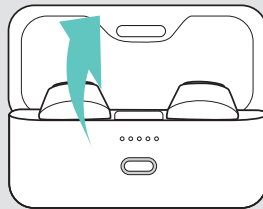


Connecting the dongle

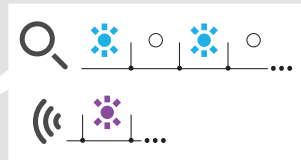
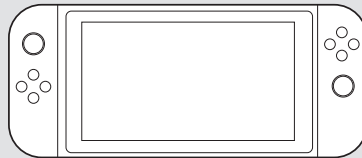
You can connect the dongle e. g. to your PC, Nintendo Switch™, PS4™ or Android™ device. Upon arrival the dongle is already paired with the earbuds.

- 1 Open the lid to power on the earbuds. Switch on your device. Make sure you are not already connected to a Bluetooth device.
- 2 A Plug the dongle into the **USB-C** port of your gaming platform of choice.
B Use the extension cable to connect it to a **USB-A** port.
The LED pulses until the dongle is connected to your earbuds.

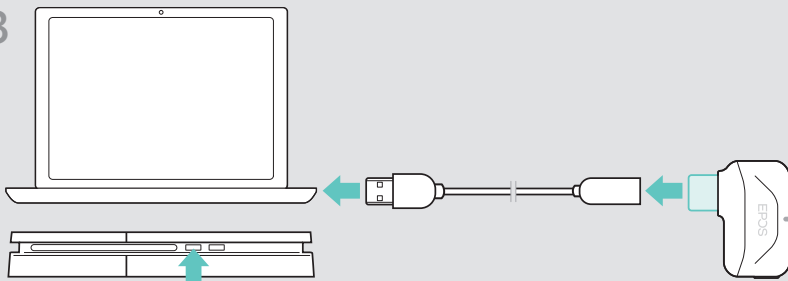
1



2A



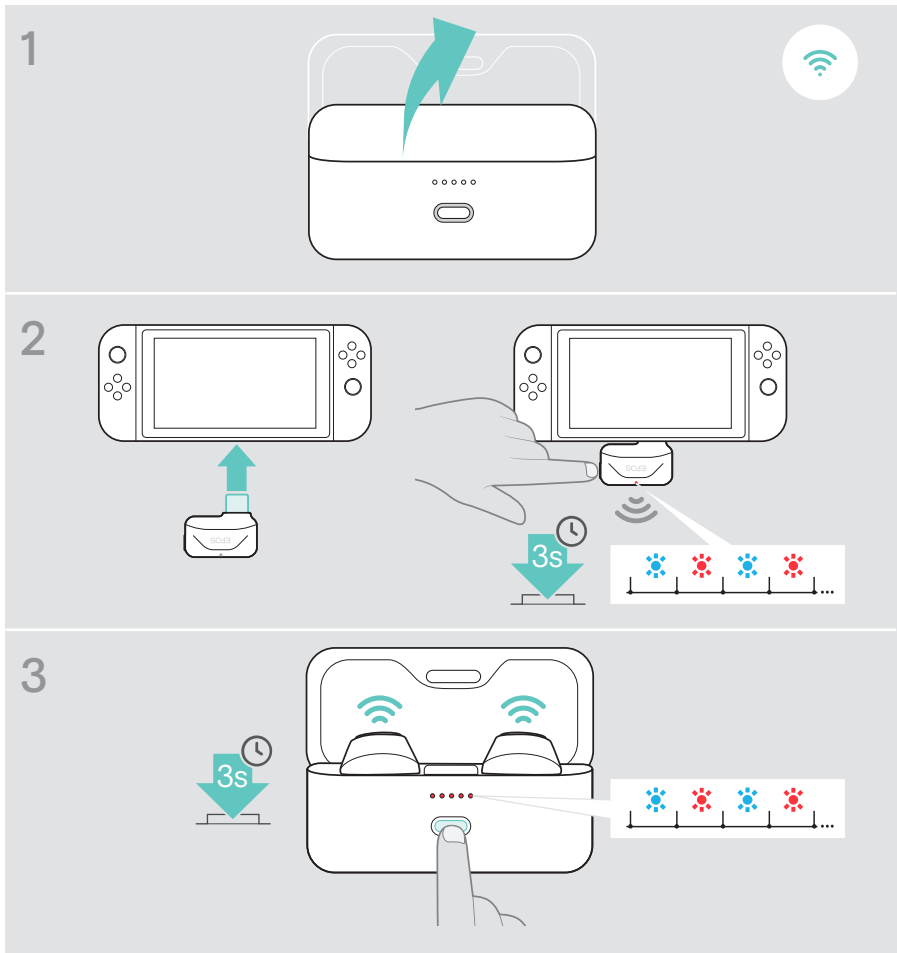
2B



Pairing with the dongle

Upon arrival the dongle is already paired with the earbuds. In case you reset your paired device list, please follow the instructions below.

- 1 Have both earbuds in the closed charge case, then open the lid.
- 2 Plug the dongle into the USB port of your gaming platform of choice. Or use the extension cable to connect it to a USB-A port. Press and hold the dongle button to initiate pairing. The LEDs pulse red and blue. The LEDs stop pulsing as soon as the devices are connected.
- 3 Press and hold the charge case button to initiate pairing. The LEDs pulse red and blue. The LEDs stop pulsing as soon as the devices are connected.

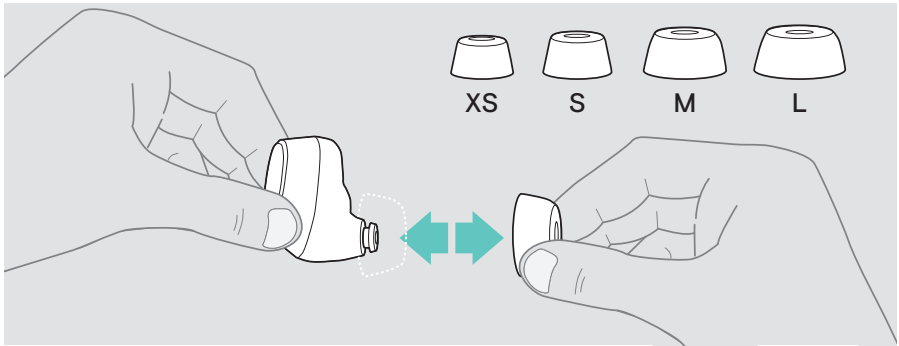


Finding your fit

Changing the eartips

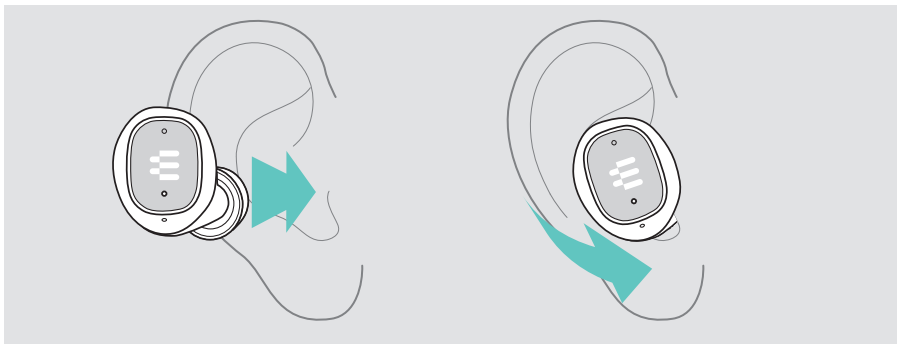
For the optimal audio experience and the most comfortable fit, try out each size of our custom-designed eartips. Check for your left and right ear separately as most people's ears are different in size. Overall, you should feel a good seal without loss of comfort.

- 1 Select eartips of the correct size (XS, S, M or L) so that the earbud sits comfortably and securely in your ear.
- 2 Remove the eartip carefully.
- 3 Push the suiting eartip on the in-ear sound tunnel and ensure that it is firmly attached.



Positioning securely in your ears

- 1 Insert the earbuds into your ears.
- 2 Rotate to fit comfortably.



How to use – the basics



CAUTION

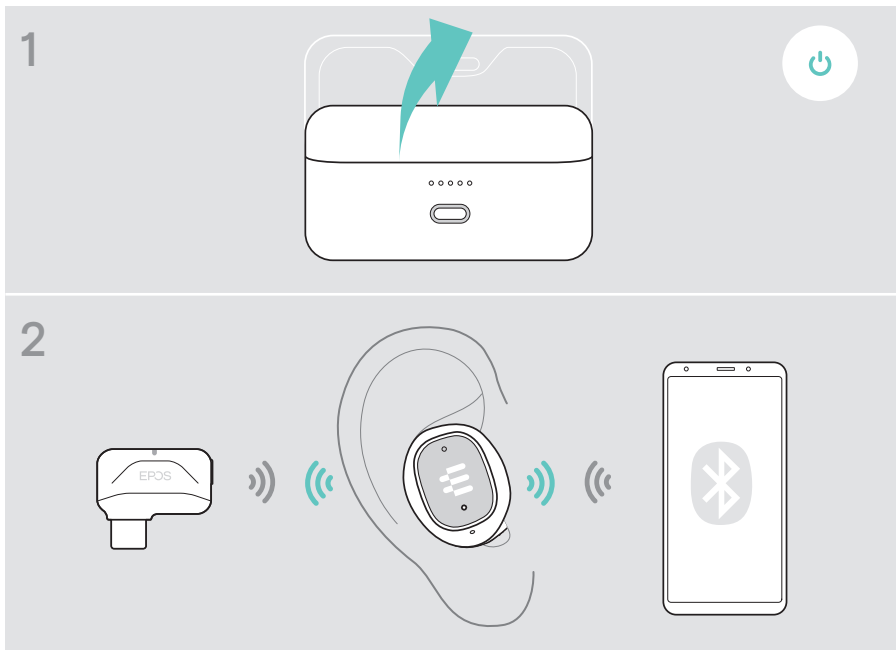
Risk of hearing damage!

Listening at high volume levels for long periods can lead to permanent hearing defects.

Set the volume on your connected device to a low level before inserting the earbuds. Do not continuously expose yourself to high volumes.

Powering the earbuds on – auto connect

- 1 Open the lid to power on the earbuds. Activate Bluetooth on your device. Insert the earbuds into your ears.
- 2 The earbuds automatically try to connect the nearest dongle or Bluetooth device – see page 17.
You hear the voice prompt “Dongle connected” / “Device connected”.

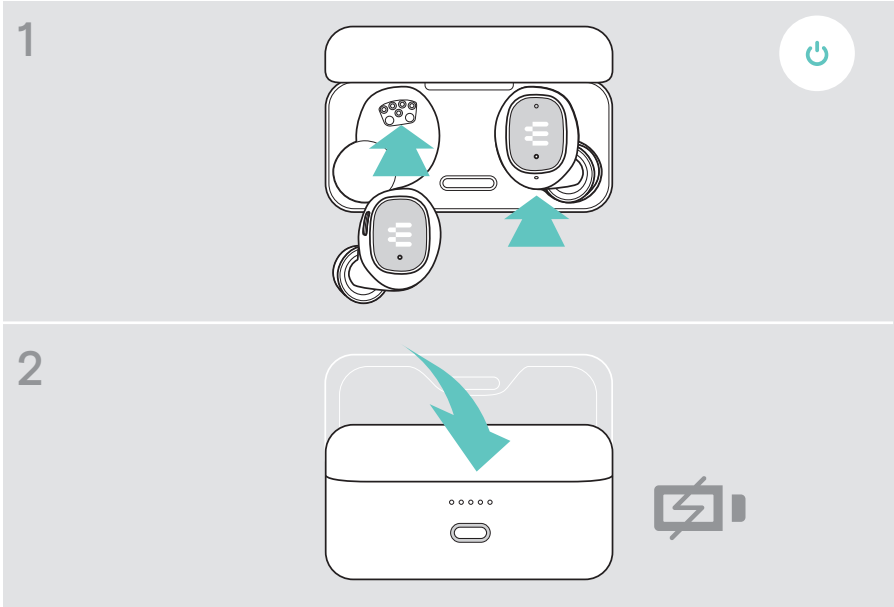


The ear buds will prioritize dongle connection. Unplug the dongle – if required.

Powering the earbuds off

Your earbuds' true home is your charge case. They feel home and safe when docked into the case.

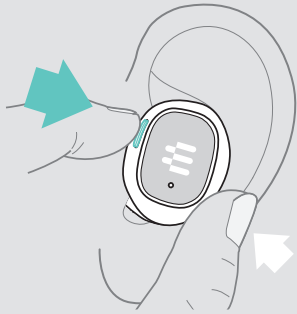
- 1 Dock both earbuds.
- 2 Close the lid to power off the earbuds and automatically charge them.
The battery is being charged – see page 15.











i If you leave the earbuds on your desk and there is no audio signal, the earbuds turn to energy saving mode after 3 minutes – see page 18.

Handling audio

Press the button* to:



		Resume streaming audio
		Pause streaming audio
		Skip to next track
		Skip to previous track

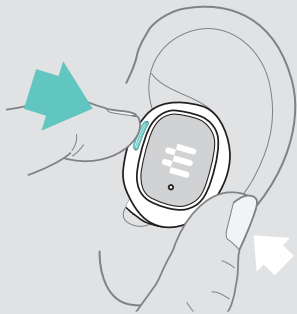
i If you receive and accept a call, audio is paused and restarts after the call – if supported by the connected device.







*Functionality varies by application

Handling calls

To make a call: Initiate it via your connected device.

Press the button* to:

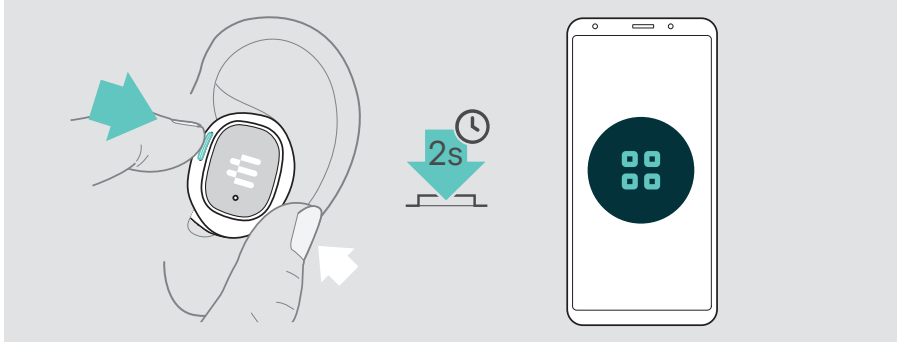


		Accept a call
		End a call
		Reject a call

*Functionality varies by application

Using Siri®, Google Now™, Alexa

Virtual Personal Assistants (VPA) such as Siri are supported by your GTW 270. Press and hold the button to activate the VPA on your device.



Installing the EPOS Gaming Suite

The free software **EPOS Gaming Suite** allows you to add value to your GTW 270.

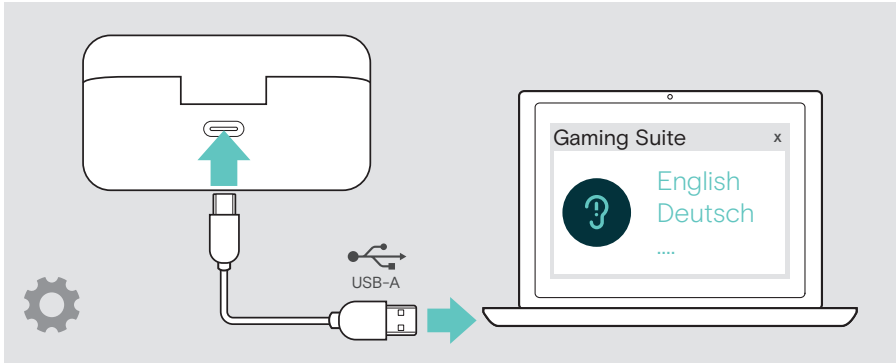
- 1 Download the software from www.eposaudio.com/gaming/downloads.
- 2 Install the software.



While using the dongle:
Through the Gaming Suite the earbuds will get more features unlocked, and deliver cutting edge audio performance.

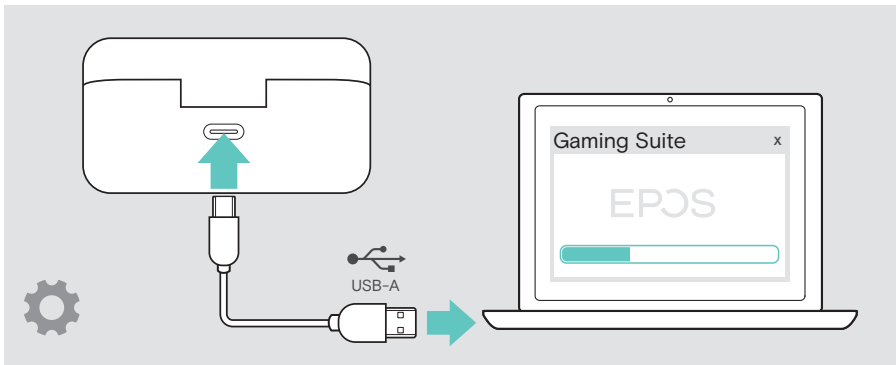
Changing the voice prompt language

- 1 Have both earbuds in the closed charge case.
- 2 Connect the USB cable to the charge case and your computer.
The LEDs light up.
- 3 Start the **EPOS Gaming Suite** and change the language in the settings.



Updating the firmware

- 1 Have both earbuds in the closed charge case.
- 2 Connect the USB cable to the charge case and your computer.
The LED lights up.
- 3 Start the **EPOS Gaming Suite**.
If there is a new firmware available the software will guide you through the update process.

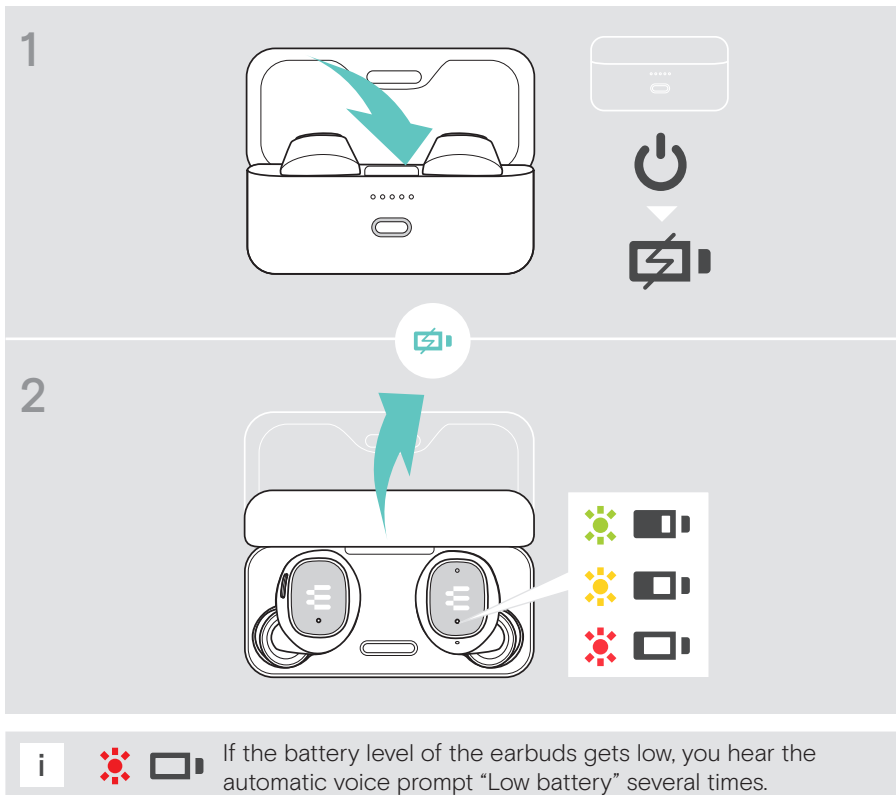


How to charge

The GTW 270 offers up to 20 hours of battery life. This includes 5 hours of battery in the earbuds plus 15 hours with the on-the-go charge case.

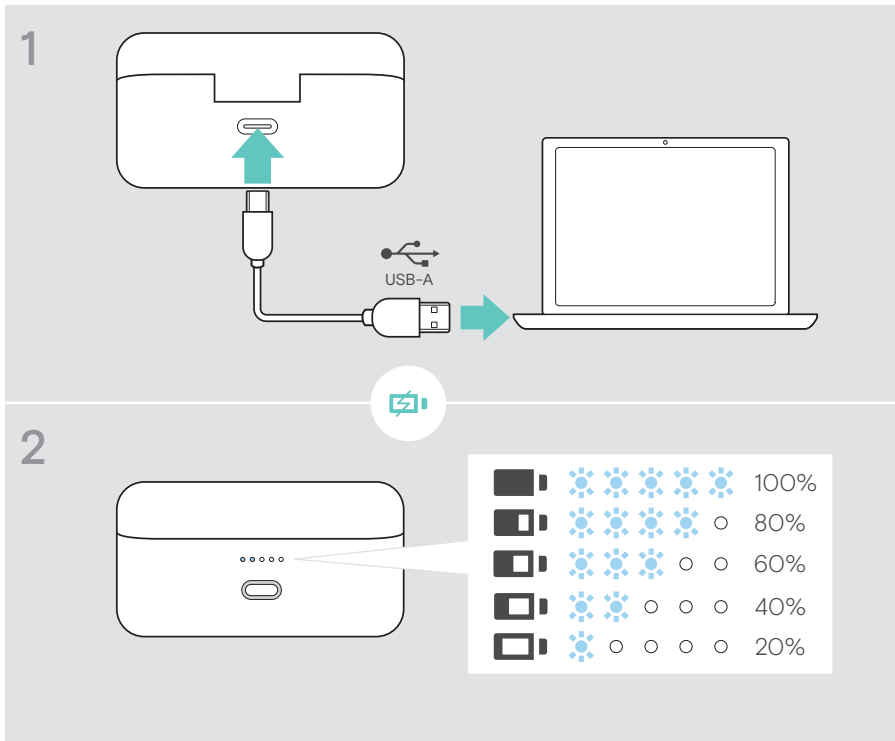
Charging the earbuds

- 1 Dock the earbuds in the charge case and close the lid.
The case LEDs pulse 3 times to show that the earbuds are powered off and charging in the case.
Full charge: 1 hour 30 minutes | Fast charge: 15 minutes for 1 hour use
- 2 Open the lid to check the earbuds' charging status.
Both earbuds light up until they are connected.



Charging the case

- 1 Plug the supplied charge cable to the charge case.
Connect the USB-A plug to your laptop or a certified wall power supply*.
You can charge the earbuds at the same time.
- 2 The LEDs light up to indicate the battery status.
Full charge: 1 hour 45 minutes for earbuds and charge case



i



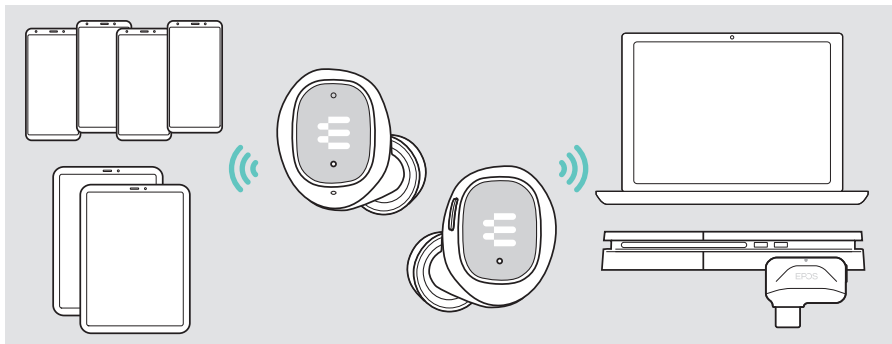
If the battery level of the case gets low, the LEDs flash red.

*Only use a USB power supply with maximum 5 V \pm 0.25 V.

Good to know

Pair up to eight devices

The GTW 270 can save up to eight paired devices. If you pair the GTW 270 with a ninth device, the device with the oldest activity will be overwritten. If you want to re-establish a connection with this device, you will need to pair it again.



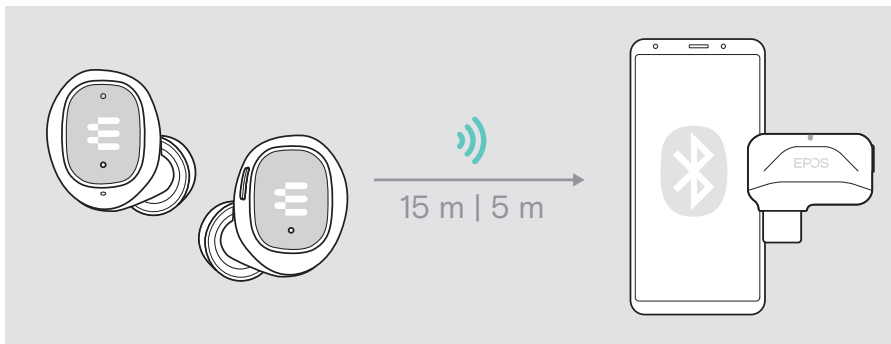
Overview of the LED indications

	Battery level high
	Battery level middle
	Battery level low
	Battery is being charged
	Battery level low
	Pairing
	Searching for earbuds
	Connected to earbuds
	Pairing

If you leave the Bluetooth or dongle's range

The range between the earbuds and the connected device is device dependent. The transmission range largely depends on environmental conditions such as wall thickness, wall composition etc. With a free line of sight, the Bluetooth transmission range is up to 15 meters and up to 5 meters via low-latency connection.

If the audio quality gets worse or the link breaks down completely: Re-enter the radio range of the Bluetooth device to re-connect.

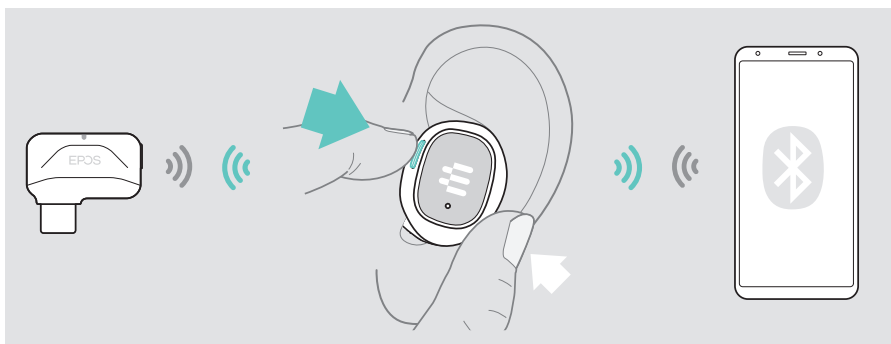


i After 3 minutes the earbuds enter energy saving mode – see next chapter.

Waking up from energy saving mode

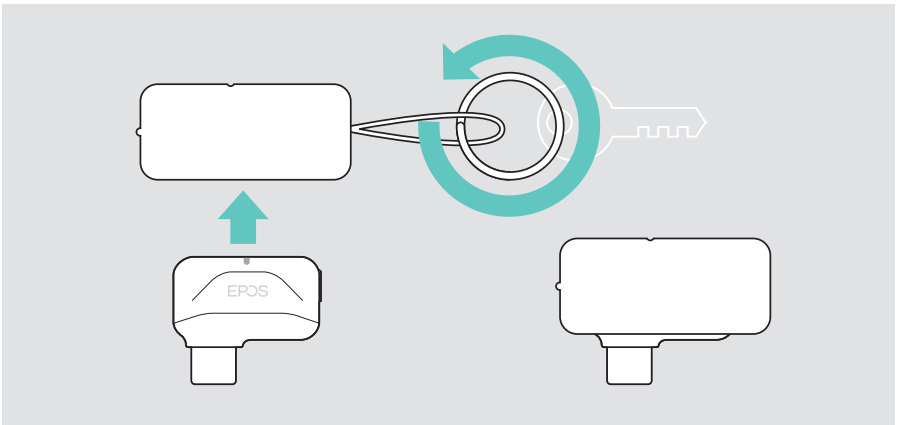
If you leave the earbuds on your desk and there is no audio signal, the earbuds turn to energy saving mode after 3 minutes.

To wake up and re-connect the earbuds: Press the button on the earbud.



Using the dongle sleeve

Attach the dongle sleeve e. g. to a key ring. Put the dongle in the sleeve.

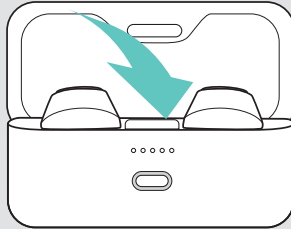


If a problem occurs ...

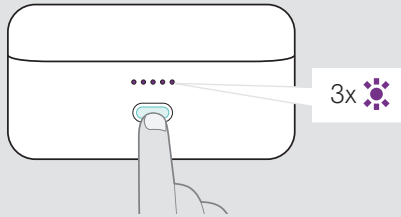
Clearing the pairing list of the earbuds (Reset)

- 1 Dock the earbuds in the charge case and close the lid.
- 2 Press the button until the LEDs flash purple 3 times. The pairing list is cleared
- 3 Open the lid to start pairing. Follow the voice instructions.

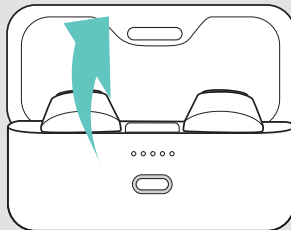
1



2



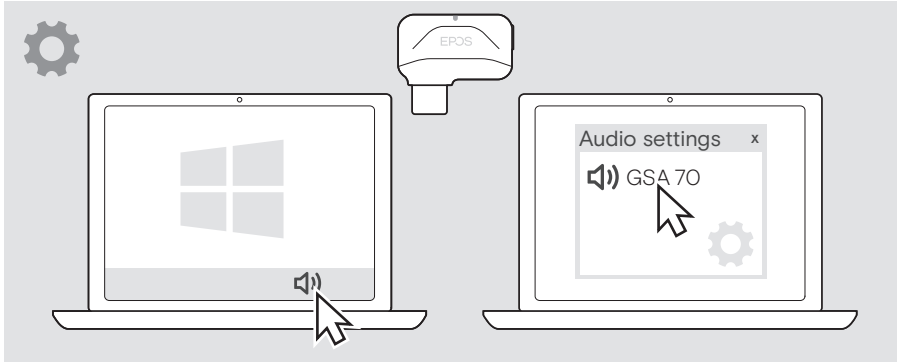
3



Changing Audio settings – Microsoft® Windows

Windows usually changes the Audio settings automatically if you connect the dongle. If the dongle and earbuds are connected but you hear no sound:

- 1 Right-click the Audio icon.
- 2 Select under output GSA 70 as main audio.



How to care for your earbuds

Store your earbuds in the charge case to keep them best protected.

Avoid storing the earbuds in hot or cold environments, for example a closed car in summer, or in winter conditions to prevent depletion of battery lifetime or capacity.

Cleaning the products

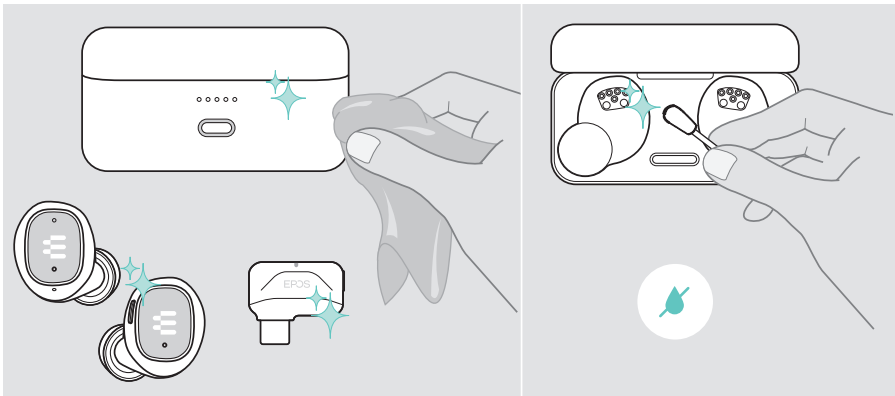
CAUTION

Liquids can damage the electronics of the product!

Liquids entering the housing of the device can cause a short circuit and damage the electronics.

Keep all liquids far away from the product. Do not use any cleansing agents or solvents.

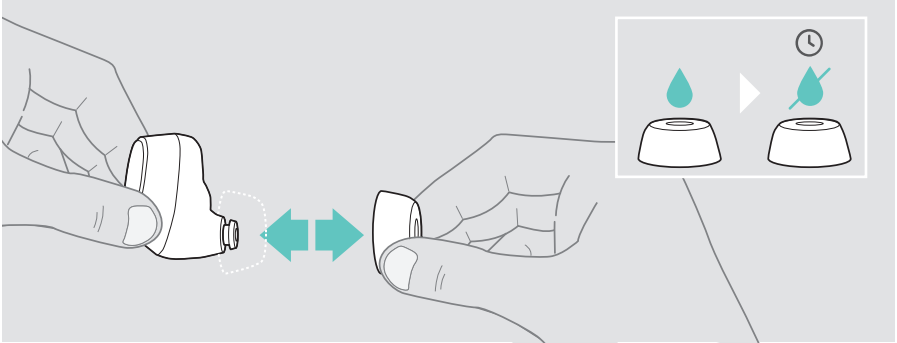
Only use a dry cloth to clean the product. Clean the charging contacts of the case and the earbuds from time to time using e. g. a cotton swab.



Cleaning the eartips

For hygienic reasons, you should wash the earbuds from time to time.

- 1 Remove the eartips carefully.
- 2 Wash the eartips with warm water or use a wet wipe and allow them to air dry.
- 3 Push the eartips on the in-ear sound tunnels.



Specifications

Earbuds

Ear coupling	In-ear
Transducer principle	Dynamic, closed
Dimensions (L x W x H)	23.8 x 23.2 x 23.7 mm / 0.94 x 0.91 x 0.93 in
Weight	Left: 6.1 g / 0.22 oz Right: 6.6 g / 0.23 oz
Noise cancellation	passive
Connectivity	Low-latency and Bluetooth® 5.1
Extension cable	1.5 m USB cable
Connector plugs	USB-C
Compatibility	Nintendo Switch, PC, PS4™, Mobile / Tablet*
Listening time	up to 5 hours + 15 hours additional time via charge case (3 recharge cycles)
Low-latency gaming time	up to 5 hours
Charging time	1.5 hours
Rechargeable battery (built-in)	Lithium Polymer / 3.7 V DC / 60 mAh
Frequency response	Speaker: 20 – 20,000 Hz Microphone: 100 – 7,500 Hz
Frequency range	2402 – 2480 MHz
Range	<ul style="list-style-type: none"> • up to 15 m Bluetooth • up to 5 m in low-latency
Sound pressure level	100 dB
Pick-up pattern	Bidirectional ECM
Sensitivity	-22 dBV/Pa

* Low-latency connection only for Android

Charge case

Dimensions (L x W x H)	67.5 x 33.2 x 36.2 mm / 2.66 x 1.31 x 1.43 in
Weight	61 g / 2.15 oz
Connection	USB-C
Charging time	1.75 hours
Rechargeable battery (built-in)	Lithium Polymer / 3.7 V DC / 500 mAh
Max. charging voltage via USB	5.25 V DC / max. current 500 mA

Dongle

Dimensions (W x H x D)	27.5 x 23.5 x 7.5 mm / 1.05 x 0.93 x 0.30 in
Weight	2.8 g / 1.0 oz / 0.006 lbs
Connector	USB-C plug
Connectivity	Bluetooth 4.2
Output power	max. 11 dBm (EIRP)

General

Temperature range	0 °C to +40 °C / +32 °F to +104 °F
Relative humidity	Operation: 10 to 85% Storage: 10 to 95%

Trademarks

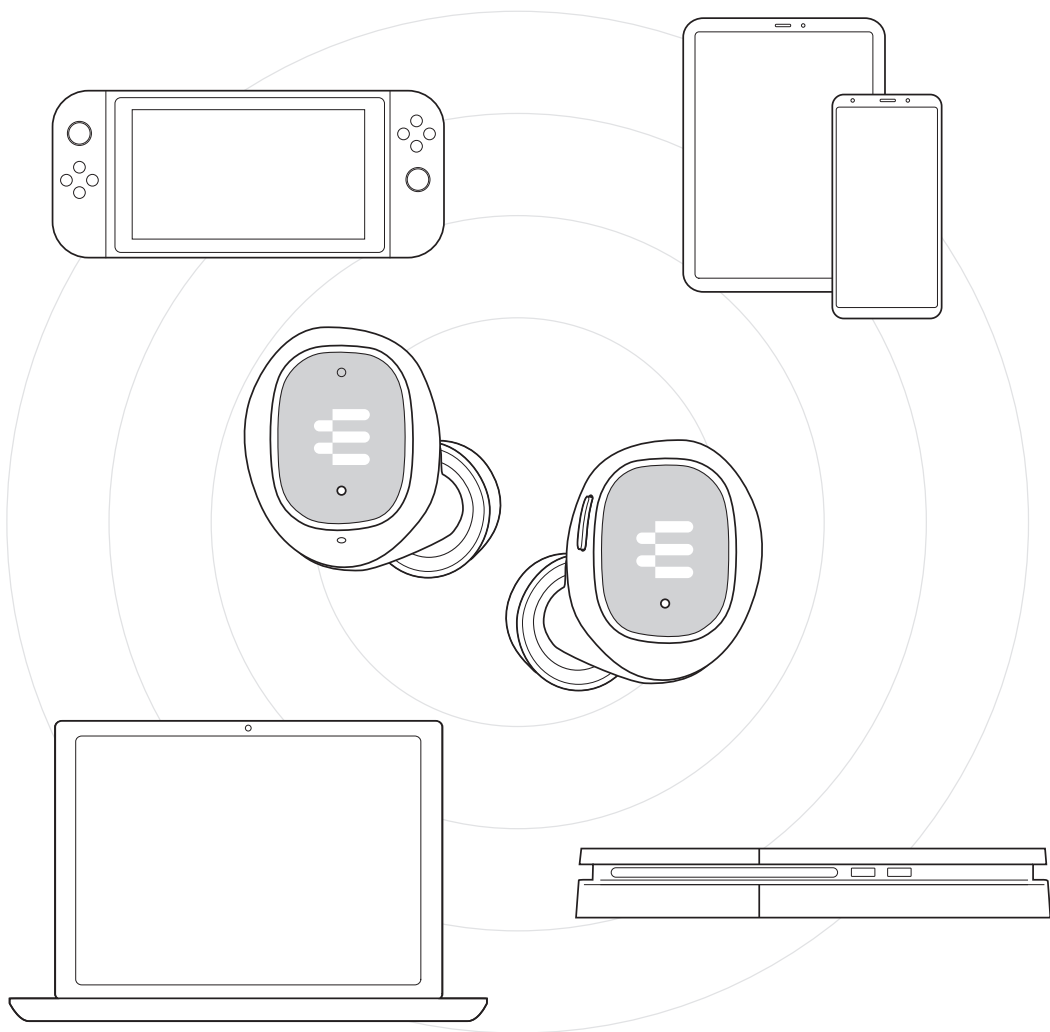
The Bluetooth® word mark and logos are registered trademarks owned by Bluetooth SIG, Inc. and any use of such marks by DSEA A/S is under license.

USB Type-C® and USB-C® are trademarks of USB Implementers Forum.

“PlayStation” is a registered trademark or trademark of Sony Interactive Entertainment Inc. also “PS4” is a trademark of the same company.

All other trademarks are the property of their respective owners.

EPOS



DSEA A/S

Kongebakken 9, DK-2765 Smørum, Denmark

www.eposaudio.com

Publ. 10/20, A01